



Hillside House Andrew Carr Farm, Oughtibridge, Sheffield, S35 8QD





# Hillside House Andrew Carr

## Oughtibridge

Offers Around

# £750,000

A rare and exceptional opportunity to purchase a beautiful five-bedroom detached house, offering breathtaking views over the surrounding countryside. Located in an exclusive gated community and in an enviable position at the top of Oughtibridge, the property boasts panoramic vistas and has been thoughtfully designed and finished to the highest standards, with modern and luxurious touches throughout.

The home features top-quality internal and external finishes, including a spacious open-plan living, dining, and kitchen area with Calacatta Gold countertops, oak herringbone flooring, a large breakfast island and a full suite of high-end appliances. There is also a utility room for added convenience. The master bedroom includes an ensuite bathroom, while the property also offers four additional double bedrooms, one of which has its own ensuite. The family bathroom is fitted with a three-piece white suite and an overhead shower.

Outside, the property is surrounded by beautifully landscaped lawned gardens and a patio area that takes full advantage of the stunning views.

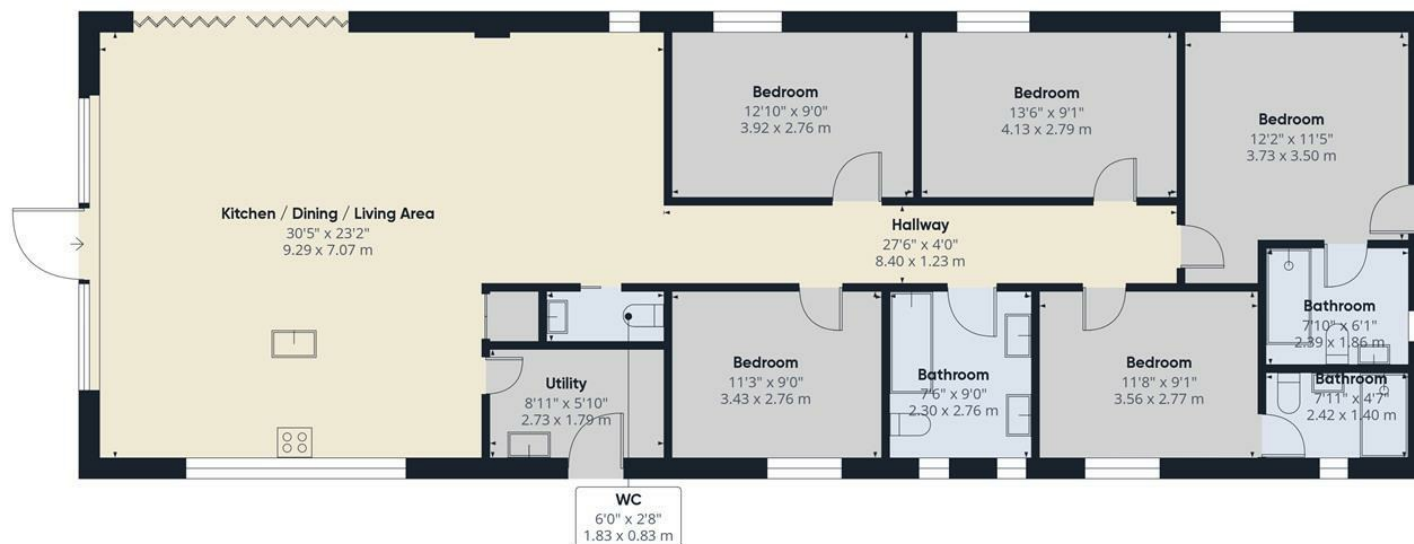
Enjoying easy access to local amenities and situated close to picturesque open countryside. The property falls within the catchment area for Oughtibridge Primary School and Bradfield Secondary School.



- Stunning Five-Bedroom Detached House In An Exclusive Gated Development
- Modern Layout With Open Plan Kitchen, Dining And Living Area
- Located In A Prime Position At The Top Of Oughtibridge With Breathtaking Panoramic Views
- Master Bedroom With Luxurious Ensuite Bathroom
- Four Additional Double Bedrooms, One With Ensuite
- Utility Room
- Spacious Patio Area Perfect For Al Fresco Dining
- Easy Access To Local Amenities And Nearby Picturesque Countryside
- Located Close To Highly Regarded Schools Of Oughtibridge Primary School And Bradfield Secondary School
- Air Source Heat Pump







**Approximate total area<sup>(1)</sup>**

1578.43 ft<sup>2</sup>  
146.64 m<sup>2</sup>

(1) Excluding balconies and terraces.

While every attempt has been made to ensure accuracy, all measurements are approximate, not to scale. This floor plan is for illustrative purposes only.

Calculations were based on RICS IPMS 3C standard. Please note that calculations were adjusted by a third party and therefore may not comply with RICS IPMS 3C.

GIRAFFE360

While we endeavour to make our sales particulars fair, accurate and reliable, they are only a general guide to the property and, accordingly, if there is any point, which is of particular importance to you, please contact the relevant office. The Agents have not tested any apparatus, equipment, fittings or services and so cannot verify they are in working order. The buyer is advised to obtain verification. Please note all the measurement details are approximate and should not be relied upon as exact. All plans, floor plans and maps are for guidance purposes only and are not to scale. Under no circumstances should they be relied upon as exact or for use in planning carpets and other such fixtures, fittings or furnishings. YOUR HOME IS AT RISK IF YOU DO NOT KEEP UP REPAYMENTS ON A MORTGAGE OR OTHER LOAN SECURED ON IT. 'A Life Assurance policy may be requested.' 'Written Quotations of credit terms available on request.'

Banner Cross  
T: 0114 268 3241  
E: [bannercross@saxtonmee.co.uk](mailto:bannercross@saxtonmee.co.uk)  
[www.saxtonmee.co.uk](http://www.saxtonmee.co.uk)

Hathersage  
T: 01433 650009  
E: [hathersage@saxtonmee.co.uk](mailto:hathersage@saxtonmee.co.uk)

Bakewell  
T: 01629 815307  
E: [bakewell@saxtonmee.co.uk](mailto:bakewell@saxtonmee.co.uk)

Matlock  
T: 01629 828250  
E: [matlock@saxtonmee.co.uk](mailto:matlock@saxtonmee.co.uk)

